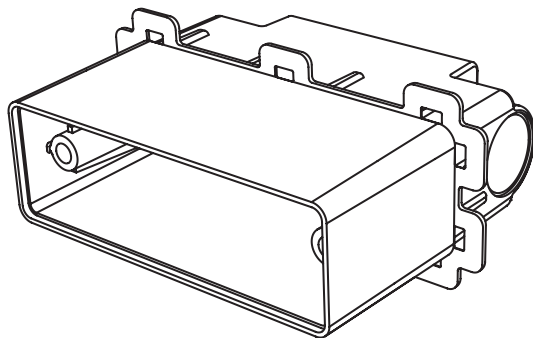


## INSTALLATION INSTRUCTIONS

### Step Light Linear Recessed - Installation Canister

SLLRC120-CANISTER-120mm

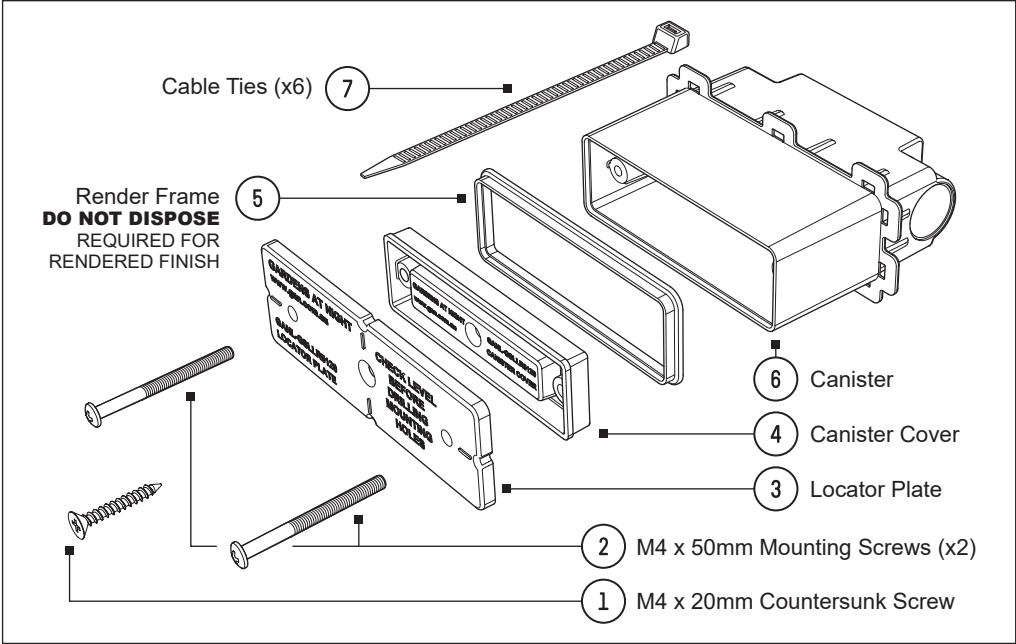
SLLRC210-CANISTER-210mm



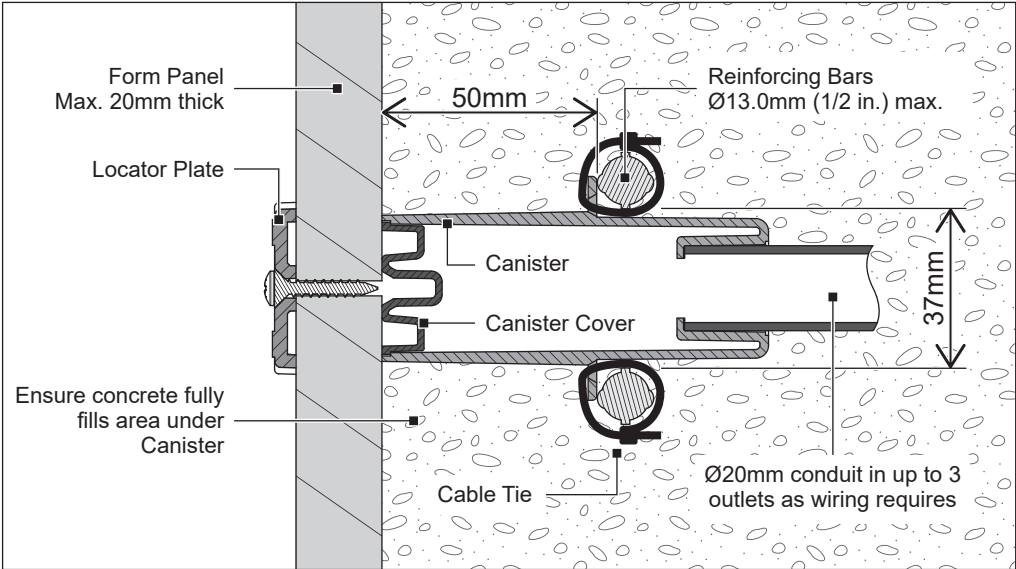
#### NOTE:

1. Gardens at Night fittings should only be connected to approved Gardens at Night 24VDC Constant Voltage (CV) Power Supplies. FAILURE TO DO SO WILL VOID WARRANTY.
2. Gardens at Night fittings must be wired in parallel and connected in accordance with installation instructions provided (including soldering of cable joins and sealing using Adhesive Lined End Caps or Tubes). FAILURE TO DO SO WILL VOID WARRANTY.
3. Fittings are polarity sensitive and need to be connected positive (+) fitting lead to positive (+) incoming and exiting feed cables and negative (-) fitting lead to negative (-) incoming and exiting feed cables.
4. Do not carry fittings by lead as it may cause damage.
5. Do not connect fittings to constant current (CC) power supplies or AC transformers as this will cause permanent fitting failure and VOID WARRANTY.

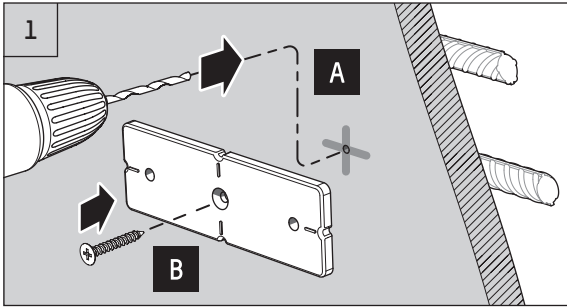
# INSTALLATION CANISTER – PARTS SUMMARY



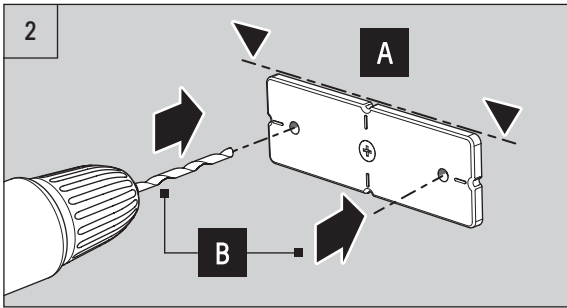
## PREFERRED CANISTER INSTALLATION – IN-SITU



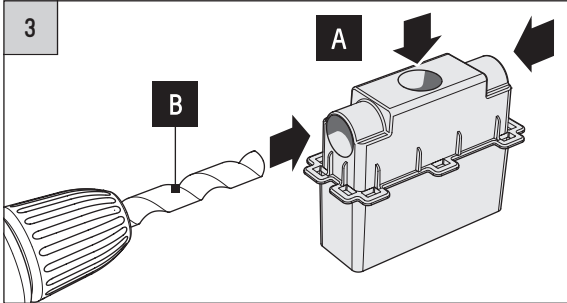
# CANISTER INSTALLATION INSTRUCTIONS – IN-SITU



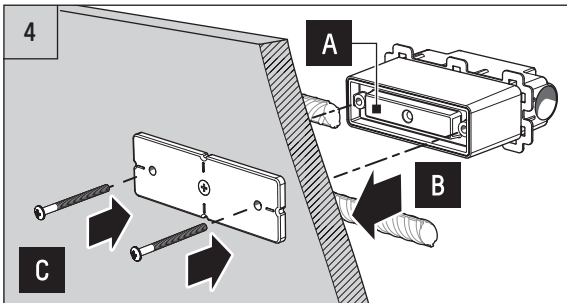
- Mark desired fitting centre point on form panel and drill  $\varnothing 3.0\text{mm}$  pilot hole (A).
- Mount Locator Plate to outside face of form panel with supplied M4 x 20mm Countersunk Screw (B).



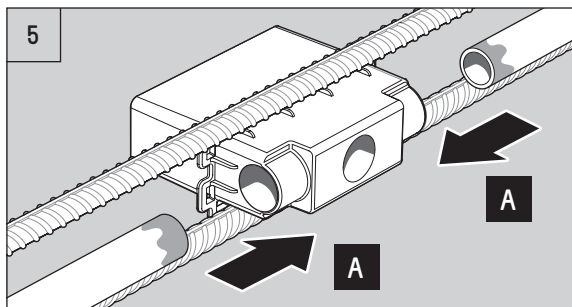
- Ensure Locator Plate is horizontal with spirit level (A). Adjust if required.
- Drill  $\varnothing 4.5\text{mm}$  holes in form panel via two guide holes in Locator Plate (B).



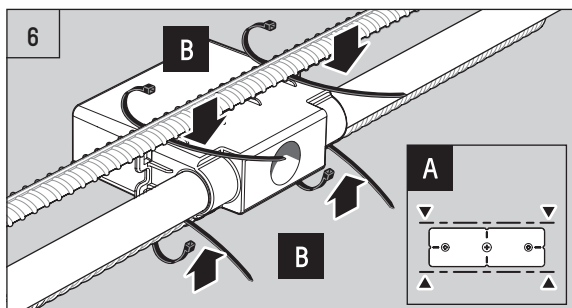
- Select preferred conduit sockets from three locations provided on Canister to suit required wiring (A).
- Use up to  $\varnothing 13\text{mm}$  (1/2in.) size drill to carefully remove socket floor (B).



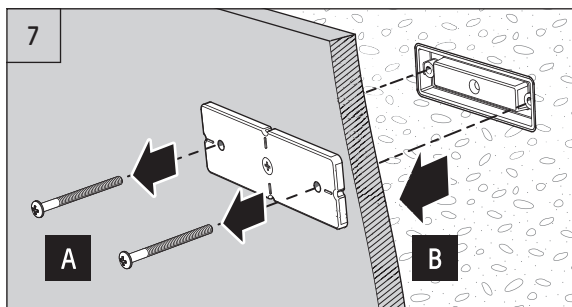
- Ensure Canister Cover is fitted to Canister (A).
- Locate Canister against rear face of form panel (B).
- Fasten Canister using two M4x50mm Mounting Screws supplied via guide holes in Locator Plate (C).



- Using solvent cement adhere conduit securely into preferred conduit sockets in Canister (A).
- Use Ø20mm conduit to connect to Canister.

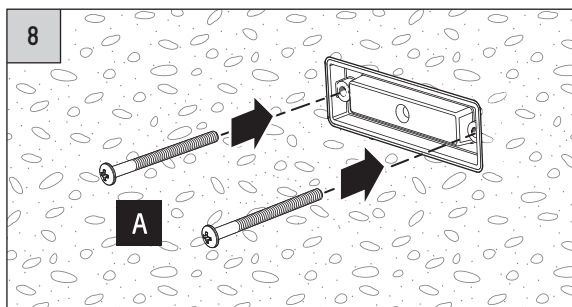


- Re-check that Locator Plate is horizontal with spirit level to confirm it has not moved (A). Adjust and re-tighten two Mounting Screws if required.
- Fix Canister to reinforcing bars using Cable Ties through Canister's external mounting eyelets (B).



After concrete pour is complete:

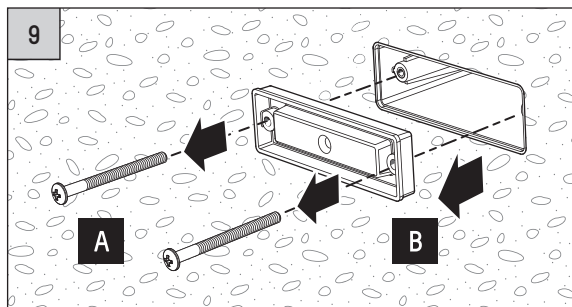
- Remove two M4x40mm Mounting Screws (A).
- Remove form panel (B).



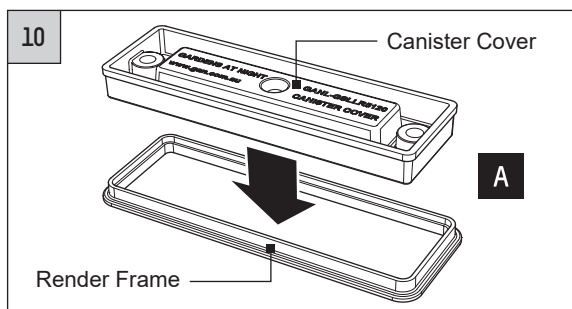
Before cleaning or finishing wall surface:

- Re-fasten Canister Cover with two M4x50mm Mounting Screws (A) to prevent debris entering Canister prior to light fitting installation.

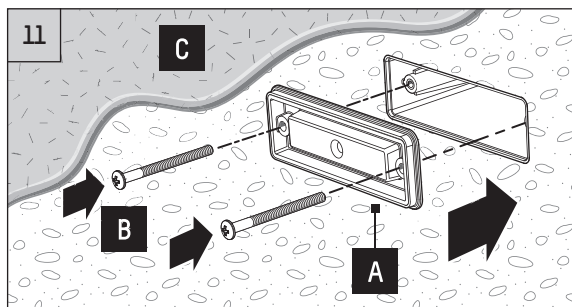
# CANISTER INSTALLATION INSTRUCTIONS – FOR RENDERED FINISHES



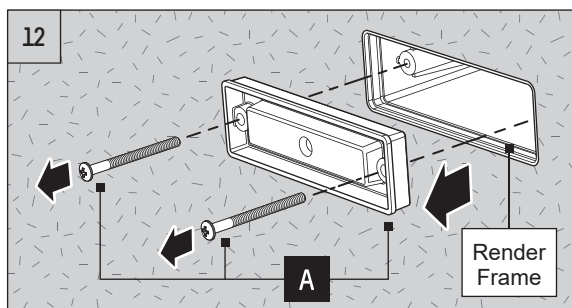
- Remove two M4x40mm Mounting Screws (A).
- Remove Canister Cover (B).



- Assemble Canister Cover into central opening in Render Frame (A).



- Insert pre-assembled Canister Cover and Render Frame into front opening of Canister (A).
- Fasten using two M4x40mm Mounting Screws supplied (B).
- Apply render finish (C) using front face of cover as a guide to achieve consistent render thickness around Canister opening.



- Prior to installing light fitting:
- Remove two M4x40mm Mounting Screws and Canister Cover (A).
  - Render Frame part remains embedded in rendered finish.

# WARRANTY STATEMENT

SERRATA GROUP PTY LTD - ABN 35 131 274 176  
Gardens at Night is a business of Serrata Group.

Serrata Group Pty Ltd warrants that, subject to the exclusions and limitations below, all Gardens at Night products will be free from defects in materials and workmanship for a minimum period of 12 months from the date of purchase or as stated on the Product Information sheet.

If a defect appears in a Product before the end of the Warranty Period, and Serrata Group Pty Ltd finds the Product to be defective in materials or workmanship, Serrata Group Pty Ltd will, in its sole discretion, either:

- (a) repair the Product or the defective part of the Product free of charge; or
- (b) cause the Product or the defective part of the Product to be repaired by a qualified repairer free of charge; or
- (c) replace the Product.

Serrata Group Pty Ltd reserves the right to replace defective parts of the Products with parts and components of similar quality, grade and composition where an identical part or component is not available. Products presented for repair may be replaced by refurbished Product parts of the same type rather than being repaired. Refurbished parts may be used to repair the Products.

## WARRANTY CLAIMS

1. If a fault covered by this warranty occurs, the customer must first contact Serrata Group Pty Ltd on the contact details below, or the trader from whom the Product was purchased.
2. Any warranty claim must be accompanied by:
  - (a) proof of purchase;
  - (b) full details of the alleged defect; and
  - (c) any other appropriate documentation.
3. The customer must make the Product available to Serrata Group Pty Ltd or its authorised repair agent for inspection and testing. If such inspection and testing finds no defect in the Product, the customer must pay Serrata Group Pty Ltd's usual costs of service work and testing.
4. The customer must bear the cost of the transport of the Product to and from Serrata Group Pty Ltd or its authorised repair agent, and all insurance of the Product.

## EXCLUSIONS

This warranty will not apply where:

- (a) the Product has been installed, repaired, altered or modified by someone other than Serrata Group Pty Ltd or its authorised agent;
- (b) the alleged defect in the Product is within acceptable industry variances;
- (c) Serrata Group Pty Ltd cannot establish any fault in the Product after testing and inspection;
- (d) the Product has been used other than for the purpose for which it was designed and manufactured;

- (e) the defect in the Product has arisen due to the customer's failure to properly use, service or maintain the Product in accordance with any instructions or user manuals that are supplied with the Product;
- (f) the Product has been subject to abnormal conditions, including environment, temperature, water, fire, humidity or similar;
- (g) the defect has arisen due to abuse, misuse, neglect or accident
- (h) the damage occurred in transit;
- (i) the damage is due to power surges.

The warranty does not extend to:

- (a) damage or defects caused by normal wear and tear; or
- (b) surface rust.

## LIMITATIONS

Serrata Group Pty Ltd makes no express warranties or representations other than set out in this warranty.

Except to the extent required by the Australian Consumer Law, the repair of the Product or part of the Product is the absolute limit of Serrata Group Pty Ltd's liability under this express warranty.

Our goods come with guarantees that cannot be excluded under the Australian Consumer Law. You are entitled to a replacement or refund for a major failure and for compensation for any other reasonably foreseeable loss or damage. You are also entitled to have the goods repaired or replaced if the goods fail to be of acceptable quality and the failure does not amount to a major failure.

Serrata Group Pty Ltd provides the warranty in relation to any Gardens at Night branded exterior and landscape lighting Product.

The benefits of this warranty are in addition to any rights and remedies imposed by Australian State and Federal legislation that cannot be excluded. Nothing in this warranty is to be interpreted as excluding, restricting or modifying any State or Federal legislation applicable to the supply of goods and services which cannot be excluded, restricted or modified.

**gardens at night**  
■■■■ landscape lighting

For information on Gardens at Night products, local distributor, showroom and contact information visit our website.

[www.gan.com.au](http://www.gan.com.au)